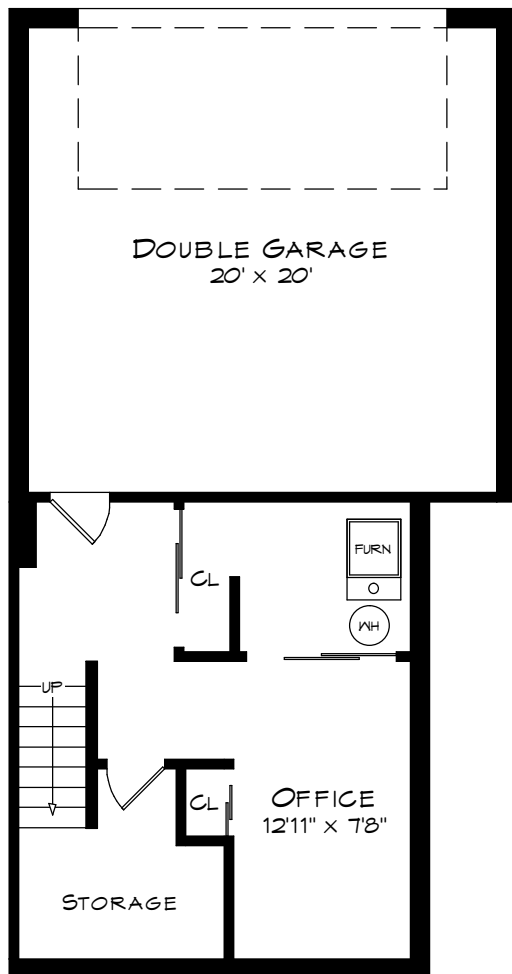
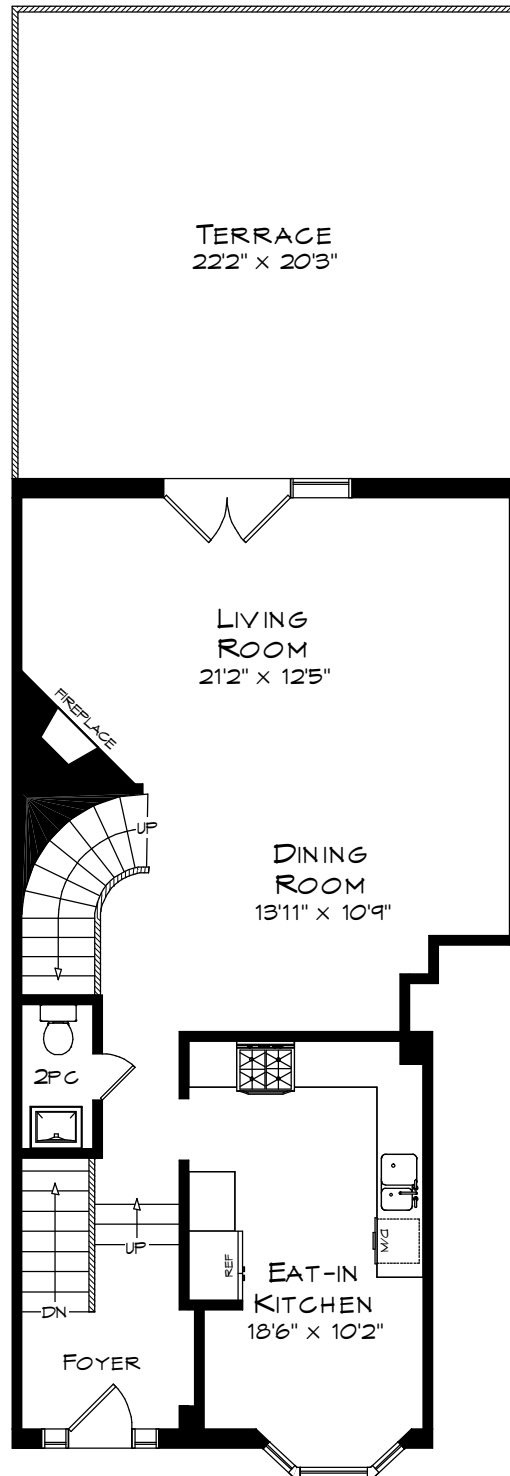


68 TRADEWIND DRIVE

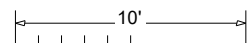
TOTAL SQUARE FOOTAGE
2,744 SQ.FT.



LOWER LEVEL
382 SQUARE FEET
+ 464 SF (GARAGE)

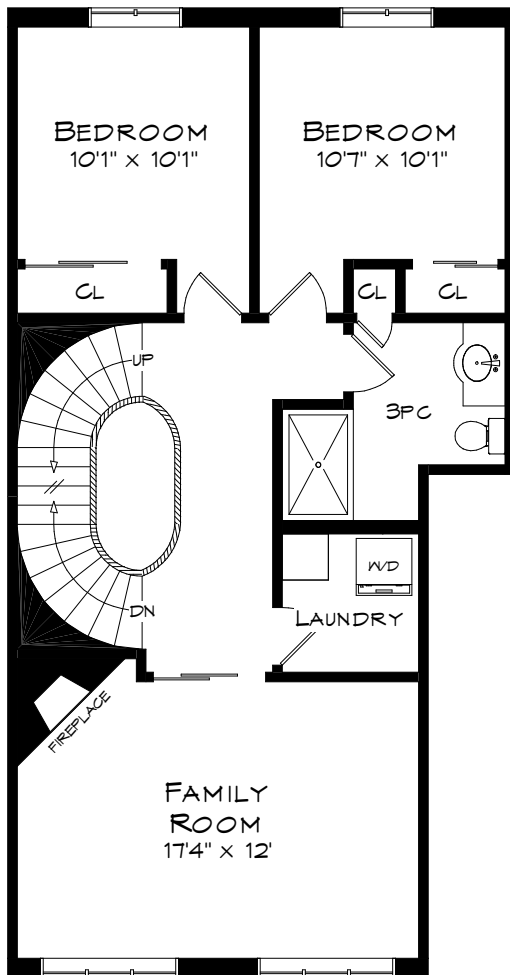


MAIN LEVEL
849 SQUARE FEET

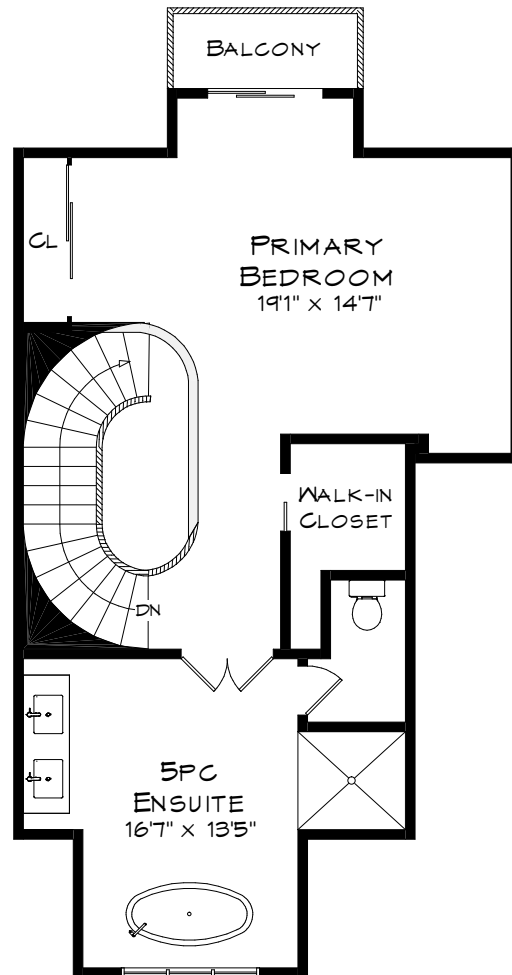


Measurements may not be 100% accurate
and should be used as a guideline only.
September - 2025

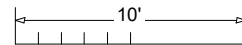
68 TRADEWIND DRIVE



SECOND LEVEL
844 SQUARE FEET



THIRD LEVEL
669 SQUARE FEET



Measurements may not be 100% accurate
and should be used as a guideline only.
September - 2025